

Using elnstruction Clickers with CIITS

Rapid response systems, also known as ‘clickers’ provide a means for teachers to quickly and easily administer a variety of assessments in the classroom. When teachers use clickers with CIITS, they can take advantage of using existing items and tests to administer assessments and quickly review the results. Tests can be administered directly from the Proctor Dashboard in CIITS.

The following elnstruction Classroom Performance System clickers are currently supported:

- KG3EI (CPS Pulse)
- KG3EI-S (CPS Spark)

It is **strongly recommended** that elnstruction clickers have a screen on the device for feedback and ease of navigation between questions. Using the IR clickers from elnstruction is not recommended as they do not have screens.

Setting up elnstruction clickers to work with CIITS:

1. For the elnstruction integration to function properly with CIITS, setup is required.

Install the v.6.71.183.52459 elnstruction Device Manager.

The Device Manager must be downloaded from the Schoolnet support site. The Device Manager should NOT be downloaded from elnstruction. Click the following links and follow the prompts to download and install the Device Manager:

URL for Windows:

- http://support.schoolnet.com/downloads/Device_Manager_Windows_Installer_6.71.183.52459.exe

URL for Mac:

- http://support.schoolnet.com/downloads/Device_Manager_Mac_Installer_6.71.183.52459.zip

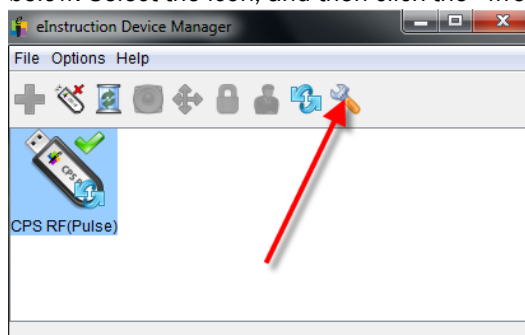
2. Install Microsoft Silverlight (Version 3.0 or later).

- <http://www.microsoft.com/getsilverlight/Get-Started/Install/Default.aspx>

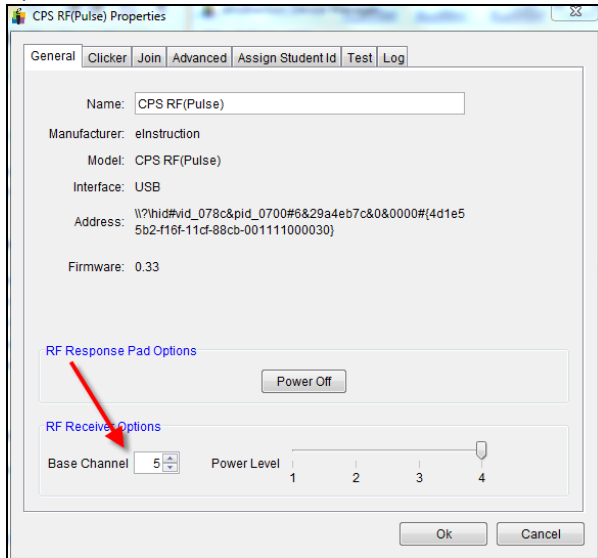
3. Confirm Clicker and Receiver Channel.

4. Plug the clicker receiver into the USB port.

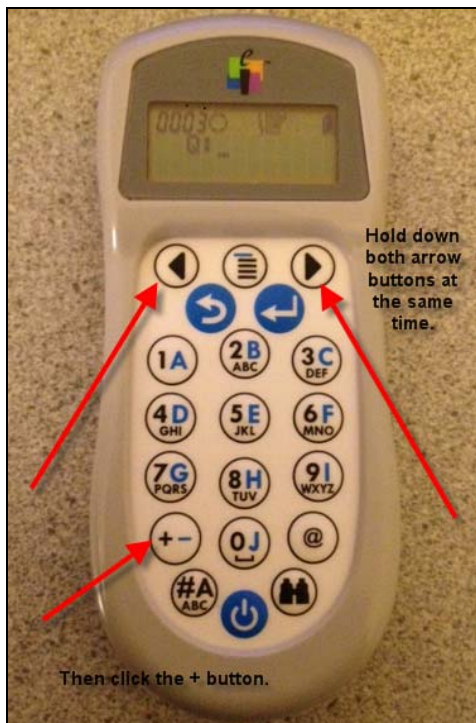
5. Find and launch the Device Manager software. If the clicker receiver drive is being properly detected by your computer, you should see an icon of the clicker receiver in the Device Manager window, as in the screenshot below. Select the icon, and then click the “wrench” icon.



- The channel that the receiver is currently transmitting on will be listed in the bottom left hand corner, indicated as the “Base Channel.” You can change the channel, but it is recommended that you leave it “as is” and update all clickers to match the channel that the receiver is transmitting.



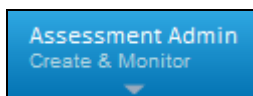
- The clicker channel must match the base channel of the clicker receiver. To identify the channel that a clicker is transmitting on, and to change it if necessary, first turn the clicker on. Then, press the two arrow buttons at the same time. Next, press the “+” button.



- You will now see the channel screen. The channel that the clicker is transmitting on will appear in the upper left-hand corner. If it matches the receiver’s channel that appeared in the Device Manager, then you can press enter to confirm. If the channel is different, then enter the receiver’s channel # and press enter.

To use clickers with the Assessment Admin tool in CIITS:

1. Open the Device Manager. It must remain active on your desktop during testing. You can minimize the window, but don't close it.
2. The first step is to connect students and clickers. Sign in to CIITS. Click the **Assessment Admin** tab.



3. Locate the desired test, and go to the Proctor Dashboard.
 - Teachers can access the Proctor Dashboard from My Schoolnet (Home) or the Assessment Admin home page.



- Non-teacher proctors can access the dashboard in **Track Completion Rates** by drilling down to the appropriate class section.
4. If the Device Manager is properly installed and active, you will see this box. Click **Connect**.



5. Connect student to clickers:
 - Students key their Student ID into their clicker and submit. (The key may be Send, Enter or an arrow depending on the clicker model.)
 - Next, the assign the clicker numbers to students on the Proctor Dashboard:
 - a) Click the handheld icon.
 - b) Type in number of clicker each student is using.
 - c) Click the Save icon.



6. Once all students are paired with clickers, click **Start Test**.

- Students enter a response for each question, and click **Send**. Teachers monitor student progress as students take the test.

Track: Proctor Dashboard

← Back to Previous Page

Ms. Durbin's Advanced Math Test[2807] [View Details](#)
Online Passcode: SUPOP8

Section Chooser
Course/Section: MATHEMATICS 6 - Sec-01 Per-2

Username Passwords
Answer Sheets
Test Booklet

Not Started: 20 | In Progress: 4 | Completed: 0

Receiving test responses from clickers

Submit Test | Pause Test

Student	Test Progress (6 questions)	Results
32 Barnett, Cashauna 1032518	[Progress bar]	
3 Broadnax, Nande 1031064	[Progress bar]	
18 Brown, Yorro 1023843	[Progress bar]	
2 Cole, Chien Han 1214797	[Progress bar]	
Coleman, Ntasha 1030376	[Progress bar]	

- When students have completed the test, collect the clickers and other test materials. Submit the test for scoring in CIITS. You will get a confirmation message; click **OK**.

Track: Proctor Dashboard

← Back to Previous Page

Ms. Durbin's Advanced Math Test[2807] [View Details](#)
Online Passcode: SUPOP8

Section Chooser
Course/Section: MATHEMATICS 6 - Sec-01 Per-2

Username Passwords
Answer Sheets
Test Booklet

Not Started: 20 | In Progress: 4 | Completed: 0

Receiving test responses from clickers

Submit Test | Pause Test

Student	Test Progress (6 questions)	Results
32 Barnett, Cashauna 1032518	[Progress bar]	
3 Broadnax, Nande 1031064	[Progress bar]	
18 Brown, Yorro 1023843	[Progress bar]	
2 Cole, Chien Han 1214797	[Progress bar]	
Coleman, Ntasha 1030376	[Progress bar]	

- View results immediately in CIITS.

Student	Test Progress (6 questions)	Results
Barnett, Cashauna 1032518	[Progress bar]	67% (4/6) ■
Broadnax, Nande 1031064	[Progress bar]	0% (0/6) ■
Brown, Yorro 1023843	[Progress bar]	67% (4/6) ■
Cole, Chien Han 1214797	[Progress bar]	83% (5/6) ■