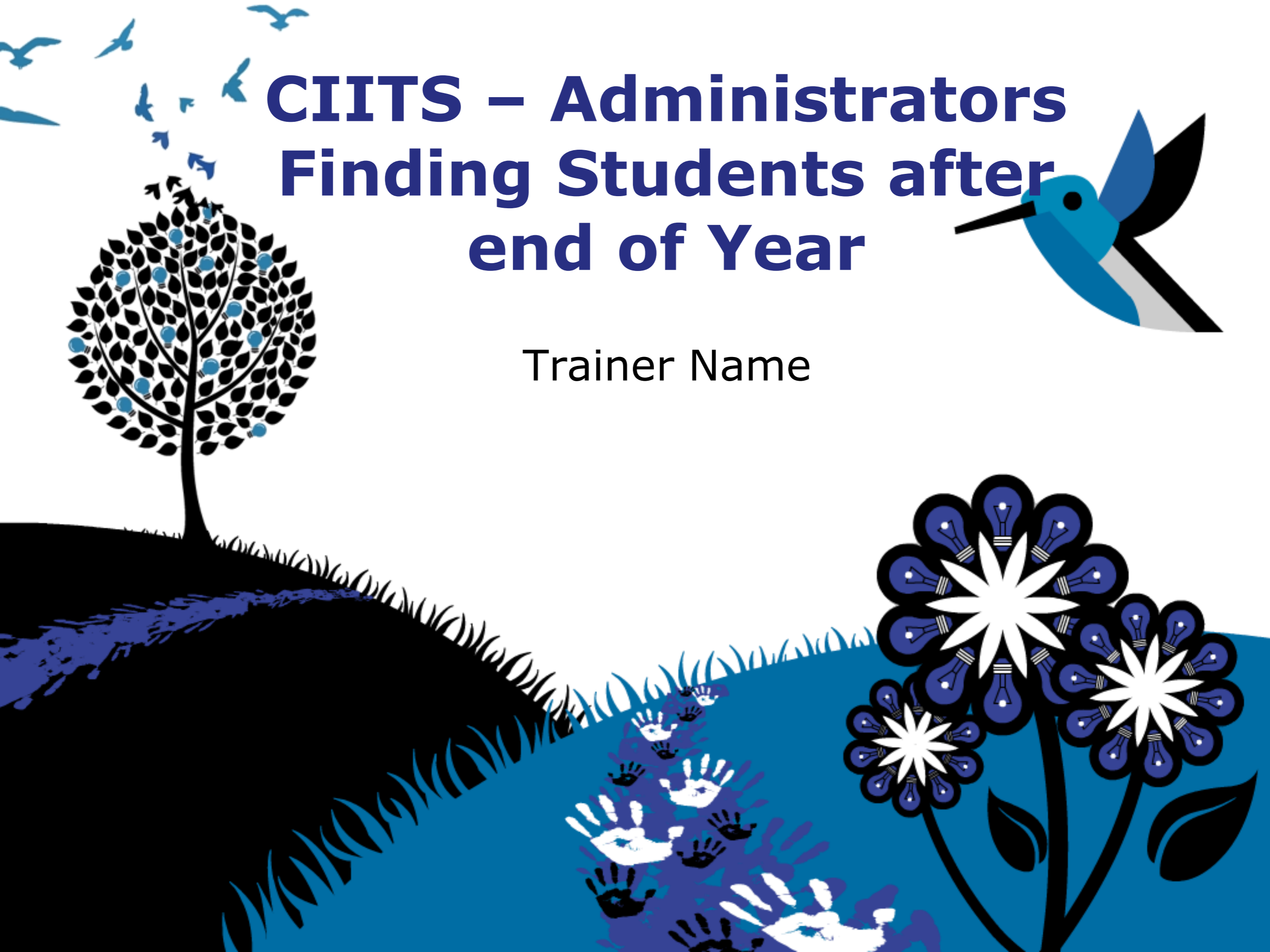


ALWAYS LEARNING



CIITS – Administrators Finding Students after end of Year

Trainer Name



Locating an Individual Student



0 Welcome, Bennie! | [Sign Out](#) | [My Account](#) | [Help](#)

- [School & District Data](#)
Reports and Indicators
- [Classrooms](#)
Standards and Instructional Materials
- [Assessment Admin](#)
Create & Monitor
- [Educator Development](#)
Goals, Performance, PD

Welcome back, Bennie.

Your last visit was today. Your role is [Leadership](#) at [Anderson County Middle School](#)

CIITS TRAINING/RESOURCES

- [Training Opportunities](#)
- [Training for Administrators & Leadership](#)
- [Training Module WebEx Calendar](#)

The Continuous Instructional Improvement Tec

Welcome to CIITS -- a powerful instructional tool that com
integrated resource for improving teaching and learning i

Key Performance Indicator Overview

Locating an Individual Student



0 Welcome, Bennie! | [Sign Out](#) | [My Account](#) | [Help](#)

- [School & District Data](#)
Reports and Indicators
- [Classrooms](#)
Standards and Instructional Materials
- [Assessment Admin](#)
Create & Monitor
- [Educator Development](#)
Goals, Performance, PD

Student Search



Please note that only students you have permission to view will be displayed.

 [Advanced Search](#)

No results were found.

Please enter a student name (last, first or both) or a student ID number into search box.

[Report Misuse](#) | [Contact Us](#) | [Tech Check](#) | [Acceptable Use Policy](#) | [About this Site](#)

schoolnet Copyright© 2005-2013 Pearson Education, Inc., or its affiliate(s). All rights reserved. NYPRODWEB33

Locating an Individual Student



0 Welcome, Bennie! | [Sign Out](#) | [My Account](#) | [Help](#)

- [School & District Data](#)
Reports and Indicators
- [Classrooms](#)
Standards and Instructional Materials
- [Assessment Admin](#)
Create & Monitor
- [Educator Development](#)
Goals, Performance, PD

Advanced Student Search

Please note that only students you have permission to view will be displayed.

First Name

Last Name

Student ID

School

Grade

School Year

[Basic Search](#)

School Year may need to be changed. If school is out look for the last school year

[Report Misuse](#) | [Contact Us](#) | [Tech Check](#) | [Acceptable Use Policy](#) | [About this Site](#)

Copyright© 2006-2013 Pearson Education, Inc., or its affiliate(s). All rights reserved. [www.pearson.com](#)

Locating Multiple Students



0 Welcome, Bennie! | [Sign Out](#) | [My Account](#) | [Help](#)

- School & District Data**
Reports and Indicators
- Classrooms**
Standards and Instructional Materials
- Assessment Admin**
Create & Monitor
- Educator Development**
Goals, Performance, PD

W
You

- Dashboard**
Key facts and figures about your students, school, and district
[Benchmark Tests](#)
[Report Bank](#)
- Report Builder**
Create views of data that suit your specific needs
[Pre-Formatted Reports](#)
[Custom Reports](#)
[Course / Section Lists](#)
- My Reports**
[Saved Reports](#)

The Continuous Instructional Improvement Tec

Welcome to CIITS -- a powerful instructional tool that cor
tegrated resource for improving teaching and learning

Key Performance Indicator Overview

Locating Multiple Students



0 Welcome, Bennie! | [Sign Out](#) | [My Account](#) | [Help](#)

School & District Data
Reports and Indicators

Classrooms
Standards and Instructional Materials

Assessment Admin
Create & Monitor

Educator Development
Goals, Performance, PD

Custom Reports



Start building your Custom Report or Analysis Spreadsheet

- **Define Student Set**
Create a Student Set to use in your custom report.
- **Build a Custom Report With All Students**
Build your custom report with all available students.
- **Choose a Saved Student Set**
Build your custom report with a Saved Student Set
- **Course / Section Lists**
Find courses and sections. Run reports on the students enrolled in those courses and sections

[Report Misuse](#) | [Contact Us](#) | [Tech Check](#) | [Acceptable Use Policy](#) | [About this Site](#)

schoolnet: Copyright© 2005-2013 Pearson Education, Inc., or its affiliate(s). All rights reserved. NYPRODWEB34

Locating Multiple Students



0 Welcome, Bennie! | [Sign Out](#) | [My Account](#) | [Help](#)

Home | **School & District Data** Reports and Indicators | **Classrooms** Standards and Instructional Materials | **Assessment Admin** Create & Monitor | **Educator Development** Goals, Performance, PD

Define Student Set



Student Set: 4,828 Students

Save Student Set

You have selected all students in all years.
No filters have been defined.

Filter(s) Created

Filter 1

No filter defined

Create Filter 1

-- Select Filter Type --

-- Select Filter Type --

- Course/Section
- Course/Section Enrollment
- Demographic Data
- Enrollment
- Standardized Assessments

Finished defining?

With this student set I would like to...

- Build Custom Report
- Continue to Analysis Spreadsheet
- Run with Saved Report

Locating Multiple Students

Define Student Set



Student Set: 4,828 Students

Save Student Set

You have selected all students in all years.

No filters have been defined.

Filter(s) Created

Filter 1

No filter defined

Create Filter 1

Demographic Data

Cancel

Apply Filter

1. Narrow your set by student demographic criteria.

Gender Male Female

Ethnicity Hispanic/Latino NOT Hispanic/Latino

Race [Select All](#) [Unselect All](#)

Hispanic/Latino

American Indian or Alaska Native

Asian

Black or African American

Native Hawaiian or other Pacific Islander

White

Locating Multiple Students


Define Student Set



Student Set: 2,504 Students



Notice how the student set has changed

 Save Student Set

Filter 1: Demographic Data

Gender: Male

Filter(s) Created

Filter 1

Type: Demographic Data

[edit](#) · [remove](#)

Clear All Filters

Create Filter 2

-- Select Filter Type --



Finished defining?

With this student set I would like to...

- Build Custom Report
- Continue to Analysis Spreadsheet
- Run with Saved Report

Go

Locating Multiple Students

Define Student Set

Student Set: 2,504 Students

Save Student Set

Filter 1: Demographic Data

Gender: Male

Filter(s) Created

Filter 1

Type: Demographic Data

[edit](#) · [remove](#)

Clear All Filters

Create Filter 2

Enrollment

Cancel

Apply Filter

1. Select where and in which grade students are enrolled.

School Type

School

Grade

2. Enter the enrollment timeframe.

School Enrollment

Current Enrollment

Total Enrollment

All students enrolled in

Enrollment Range

Start date

End date

Students who were enrolled at any point during this range.

Select Enrollment Range.

Enter the Start and End Dates

Locating Multiple Students



Define Student Set

Student Set: [140 Students](#)



Click the hyperlink to see the students names

Save Student Set

Filter 1: Demographic Data

Gender: Male

Filter 2: Enrollment

School Type: Middle School

School: Anderson County Middle School

Grade Level: 06

School Enrollment: At 5/10/2013

Filter(s) Created

Filter 1

Type: Demographic Data

[edit](#) · [remove](#)

Filter 2

Type: Enrollment

[edit](#) · [remove](#)

[Clear All Filters](#)

Create Filter 3

-- Select Filter Type --



Finished defining?

With this student set I would like to...

- Build Custom Report
- Continue to Analysis Spreadsheet
- Run with Saved Report

[Go](#)

Locating Multiple Students



View Students

Student Set: 140 Students [\(edit\)](#)

Filter 1: Demographic Data

Gender: Male

Filter 2: Enrollment

School Type: Middle School

School: Anderson County Middle School

Grade Level: 06

School Enrollment: At 5/10/2013

Note: Only students you have permission to view are displayed.

Student 1 - 50 of 140

< Prev. 50

Next 50 >

ADKINS, RICHARD

AGUILAR, JONATHON

ANDERSON, CHARLIE

BABER, DYLAN

BAKER, SEBASTIAN

BARNES, LUIS

BEST, CARLOS

BISHOP, IGNACIO

BLACKFORD, ANTHONY

BLYTHE, CODY

Create a report with this Student Set
Select a report below.

Recommended

My Reports

Advanced

All Categories



Reports 1 - 4 of 4 [\(View all\)](#)

[MAP Goal Area Results - Elementary](#)

[KPrep](#)

[MAP](#)

[First Grade MAP Percentiles](#)

[View all 4 Recommended Reports](#)

Locating Multiple Students

Student Profile: RICHARD D ADKINS

 [Create PDF](#) 

Anderson County Middle School, Grade 06

Student ID: 887347226

Student Overview	Standardized Tests	Enrollment & Academic Record	Classroom Tests
-------------------------	------------------------------------	--	---------------------------------

Personal Information

Guardian or Parent	RASHAWN ADKINS, GINA ADKINS
Address	1 Main St Big City, Ky 40214
Telephone	(956)974-1320
Date of Birth	4/29/2001
Gender	Male
Ethnicity	NOT Hispanic/Latino
Race	White
Race Reporting Category	White
Special Education	NA

Current Enrollment

School	Anderson County Middle School
Grade	06
Homeroom	NA
Enrollment Dates	08/15 - Present
Days Enrolled	170
Absences	4.5
Tardy	5
Taking Classes at	Anderson County Middle School