

PSU



Special Programs

NEW SPECIAL PROGRAMS TRACK AT PSU ATLANTA - FOR END USERS AND ADMINISTRATORS

PowerSchool Special Programs helps educators meet the needs of students in special education, gifted and talented, English language learning, and section 504 programs. Now PowerSchool University attendees can learn how to ensure better compliance of their IEPs, Evaluations, Section 504 processes, and data reporting requirements with these new course offerings.

Four Day PSU Track Includes:

INTRODUCTION

Overview of features that will simplify collaboration among staff, streamline documentation, and administer case management.

ADMINISTRATION (TWO PART SESSION)

Explore features like integration and Single Sign-On. Learn how to assign security, setup documents, use keyword tables, and more.

END USERS EXPERIENCE (TWO PART SESSION)

Learn about special features available to ease the documentation process and monitoring of student progress for the end user.

INTRODUCTION TO REPORT WRITING

Join us for a look at how to create list and multi-dimensional reports with ease using the embedded report writing tool.

OTHER FUNCTIONALITY AND TOPICS

Special Programs has a lot of bells and whistles! We'll highlight the most used advanced functionality throughout the system.

COMMON SUPPORT QUESTIONS & SOLUTIONS

Learn how PowerSchool consultants can assist you with continued deployment after go-live, custom reports, staff training, and more.

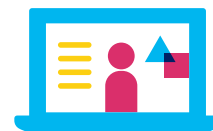
ACHIEVEMENT PRACTICES: CO-PLANNING

Learn a five step approach to co-planning and the role of both the general education and special education teacher in the process.

ACHIEVEMENT PRACTICES: CO-TEACHING

Review the six co-teaching approaches and best practices to increase student achievement and engagement for all learners.

KEY BENEFITS



Streamline Documentation



Build Dynamic Reports



Learn Advanced Features



Employ Best Practices

For full course catalog and to register, visit the [PSU Atlanta](#) event page on www.PowerSchoolUniversity.com. For more information, email us at psu@powerschool.com or call (916) 288-1600