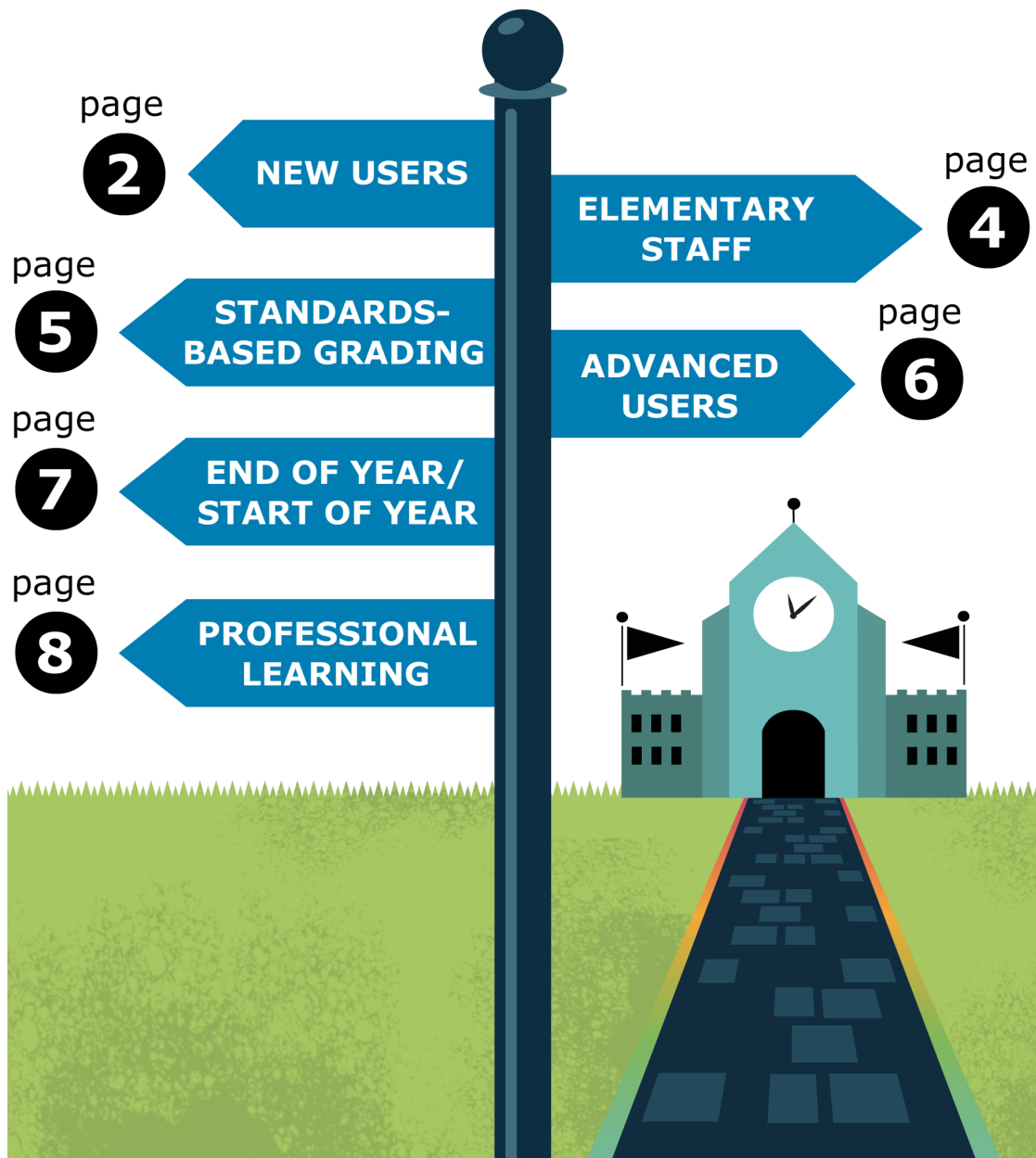


# PSU Winter Training Roadmap

## PSU Winter Training Roadmap

Unsure about which PowerSchool University (PSU) courses to take? Overwhelmed with so many choices? Download the PSU roadmap for direction on which courses you should take based on your experience level, job role, or topic interest.

PSU goes beyond courses! As you consider your personal training needs, remember that you can get individualized help from our PowerSupport team (schedule a 20-minute appointment through your My PSU page) and in Open Lab (offered Monday, Wednesday, and Thursday afternoons).



# PSU Winter Training Roadmap

---

## New Users Roadmap

PowerSchool University isn't just for advanced users. Almost half of the attendees are brand-new PowerSchool users! If this describes you, look over the list below containing our recommendations for the best courses for new PowerSchool users before you choose what to take. You can find full descriptions of each course in the PSU course catalog.

## The IPT Track

If you have never attended a PowerSchool Instant Productivity Training (IPT), start with these courses to learn the basics:

- PowerSchool 101
- PowerSchool 102
- Enrollments and Scheduling
- PowerTeacher Pro for Teachers Part One
- PowerTeacher Pro for Teachers Part Two
- Using System Reports

If you choose to take all of the courses on the IPT Track (that works out to two per day), then you will have one additional day to take two of the courses from the lists below.

If you are a Unified Classroom teacher, instead of taking the PowerTeacher Pro for Teachers courses, take the following courses:

- Unified Classroom: Assessment
- Unified Classroom: Class Pages
- Unified Classroom: Grading
- Unified Classroom: Solutions

## The Next Level

If you're familiar with the basics, but would like to take your knowledge to the next level, consider some of these courses:

- Attendance Administration
- Attendance Reports
- Decipher and Use PowerSchool Codes
- Excel: Basics and Beyond
- Excel: Analyze PowerSchool Data
- Import & Export
- Incident Management
- Managing Staff and Students
- PowerTeacher Pro for Administrators
- Preparing for End of Term
- Standards-Based Grading Setup

# PSU Winter Training Roadmap

---

## System Administrators

If you're a new PowerSchool system administrator and have had some previous PowerSchool training, consider taking some of these courses:

- Custom Field Migration
- Customizations 101: Introduction to Customizations
- Customizations 102: Creating Custom Pages
- Customizations 113: Using Database Extensions to Create Pages
- Customizations 114: Database Extensions, Alerts, and Plugins
- Customizations 201: Introduction to SQL
- Customizations 202: Intermediate SQL
- Customizations 401: Introduction to JavaScript
- End of Year/Start of Year
- GPA and Honor Roll: Introduction
- System Administrator: Security Settings
- System Administrator: Server Settings
- System Administrator: System Settings
- Using DDE and DDA

# PSU Winter Training Roadmap

---

## Elementary Staff Roadmap

Many districts and schools across the world have discovered that PowerSchool contains features and functions that fit every grade level at any school, and it looks and works consistently, no matter where it's used. PowerSchool University courses that offer examples from secondary schools also contain valuable information for elementary schools.

Use this guide to find courses that cover subjects important to elementary staff. You can find full descriptions of each course in the PSU course catalog.

## Novice PowerSchool Users

If you are new to PowerSchool, or even if you have already attended Instant Productivity Training, start with these courses to learn the basics:

- Conducting Student Searches
- Enrollments and Scheduling
- PowerSchool 101
- PowerSchool 102
- PowerTeacher Pro for Teachers Part One
- PowerTeacher Pro for Teachers Part Two
- Unified Classroom: Grading
- Using System Reports

## The Next Level

If you're familiar with the basics, but would like to take your knowledge to the next level, consider some of these courses:

- Attendance Administration
- Attendance Reports
- End of Year/Start of Year
- Excel: Basics and Beyond
- Excel: Analyze PowerSchool Data
- Excel: Adapt PowerSchool Data
- Excel: Advanced Functions
- Import & Export
- Managing Staff and Students
- PowerTeacher Pro for Administrators
- PowerScheduler: Visual Scheduler
- Preparing for End of Term
- Standards-Based Grading Setup
- Unified Classroom: Assessment
- Unified Classroom: Class Pages

# PSU Winter Training Roadmap

---

## Standards-Based Grading Roadmap

Use this guide to find courses that cover subjects important to PowerSchool users who are implementing the common core or standards-based grading in their district.

You can find full descriptions of each course in the PSU course catalog.

## Courses that Include Standards-Based Grading Topics

To learn more about standards-based grading, consider the following classes:

- PowerTeacher Pro for Administrators – Learn how to set up standards grade calculations and preferences at the district or school level for PowerTeacher Pro
- PowerTeacher Pro for Teachers Part One – Become familiar with the next generation gradebook that includes robust standards-based grading features
- PowerTeacher Pro for Teachers Part Two – Learn more about the HTML-based gradebook, including how to analyze student performance on standards
- Object Reports 1: Basic Building Blocks – Explore the basics of using an object report
- Object Reports 3: Report Cards and Transcripts – Learn to create a simple standards-based report card
- Standards-Based Grading Setup – Learn to set up your standards in PowerSchool
- Unified Classroom: Grading – Learn how to use Unified Classroom to manage standards-based grading in your classroom and communication with students and parents

# PSU Winter Training Roadmap

---

## Advanced Users

Use this guide to find courses that cover subjects important to advanced PowerSchool users. You can find full descriptions of each course in the PSU course catalog.

## Customizations

If you would like to customize your PowerSchool server, consider these courses:

- Custom Field Migration
- Customizations 101: Introduction to Customizations
- Customizations 102: Creating Custom Pages
- Customizations 113: Using Database Extensions to Create Pages
- Customizations 114: Database Extensions, Alerts, and Plugins
- Customizations 201: Introduction to SQL
- Customizations 202: Intermediate SQL
- Customizations 203: Advanced SQL
- Customizations 350: Using Database Extensions
- Customizations 401: Introduction to JavaScript
- Customizations 402: Using JavaScript to Automate
- Customizations 450: Creating Insertion Points and Plugins
- Customizations 501: PowerSchool Customizations Academy
- Customizations Consultation

## Data

If you would like to manage your data more efficiently, consider these courses:

- Customizations 201: Introduction to SQL
- Customizations 202: Intermediate SQL
- Customizations 203: Advanced SQL
- Excel: Analyze PowerSchool Data
- Excel: Adapt PowerSchool Data
- Excel: Advanced Functions
- Import & Export
- System Administrator: Server Settings
- System Administrator Lab: Server Settings
- Using DDE and DDA

# PSU Winter Training Roadmap

---

## Reports

If you would like to build custom reports, consider these courses:

- Enterprise Reporting for APEX Report Builders
- Enterprise Reporting for Report Users
- Object Reports 1: Basic Building Blocks
- Object Reports 2: Student Lists
- Object Reports 3: Report Cards and Transcripts
- PowerSchool Reports Lab

## End of Year/Start of Year Roadmap

Ending a school year and beginning a new one involves a lot of work and a lot of PowerSchool checks. The best guideline to use when preparing for a new school year is the Start of Year Checklist, which is found at the end of the PowerSchool Start of Year Guide (ID 57943) on PowerSource. But how do you find all those topics at PSU?

Use this guide to explore which PSU courses cover End of Year and Start of Year topics.

You can find full descriptions of each course in the PSU course catalog.

For End of Year and Start of Year topics, take the following PSU classes:

- Attendance Administration – Attendance settings and full-time equivalencies
- Decipher and Use PowerSchool Codes – Data access tags and reports
- End of Year/Start of Year – Steps involved in the End of Year and Start of Year processes
- Enrollments and Scheduling – Student schedules and school master schedules
- GPA and Honor Roll: Introduction – GPA methods and calculations, honor roll methods, and class rank methods
- PowerSchool 101 – PowerSchool Student and Parent Portals
- Preparing for End of Term – Years and terms, final grade setup, and the daily bulletin
- System Administrator: Security Settings – Student and parent access information, security groups, and course management
- System Administrator: Server Settings – Backups
- System Administrator: System Settings – PowerSchool Student and Parent Portals setup

# PSU Winter Training Roadmap

---

## Professional Learning Roadmap

If you are a curriculum specialist, teacher, school administrator, superintendent, or any other staff member responsible for curriculum and student outcomes, consider taking courses from the Professional Learning track.

PowerSchool's Professional Learning courses are:

- Professional Learning: Aligning Instructional Resources
- Professional Learning: Constructed Response Plans
- Professional Learning: Formative Assessments
- PowerSchool Unified Insights™ Assessment Dashboards: Introduction

Additional recommended courses:

- Excel: Basics and Beyond
- Excel: Analyze PowerSchool Data
- Excel: Adapt PowerSchool Data
- Excel: Advanced Functions